

1255 BATTERY STREET

FLOOR 5 | 31,441 SF

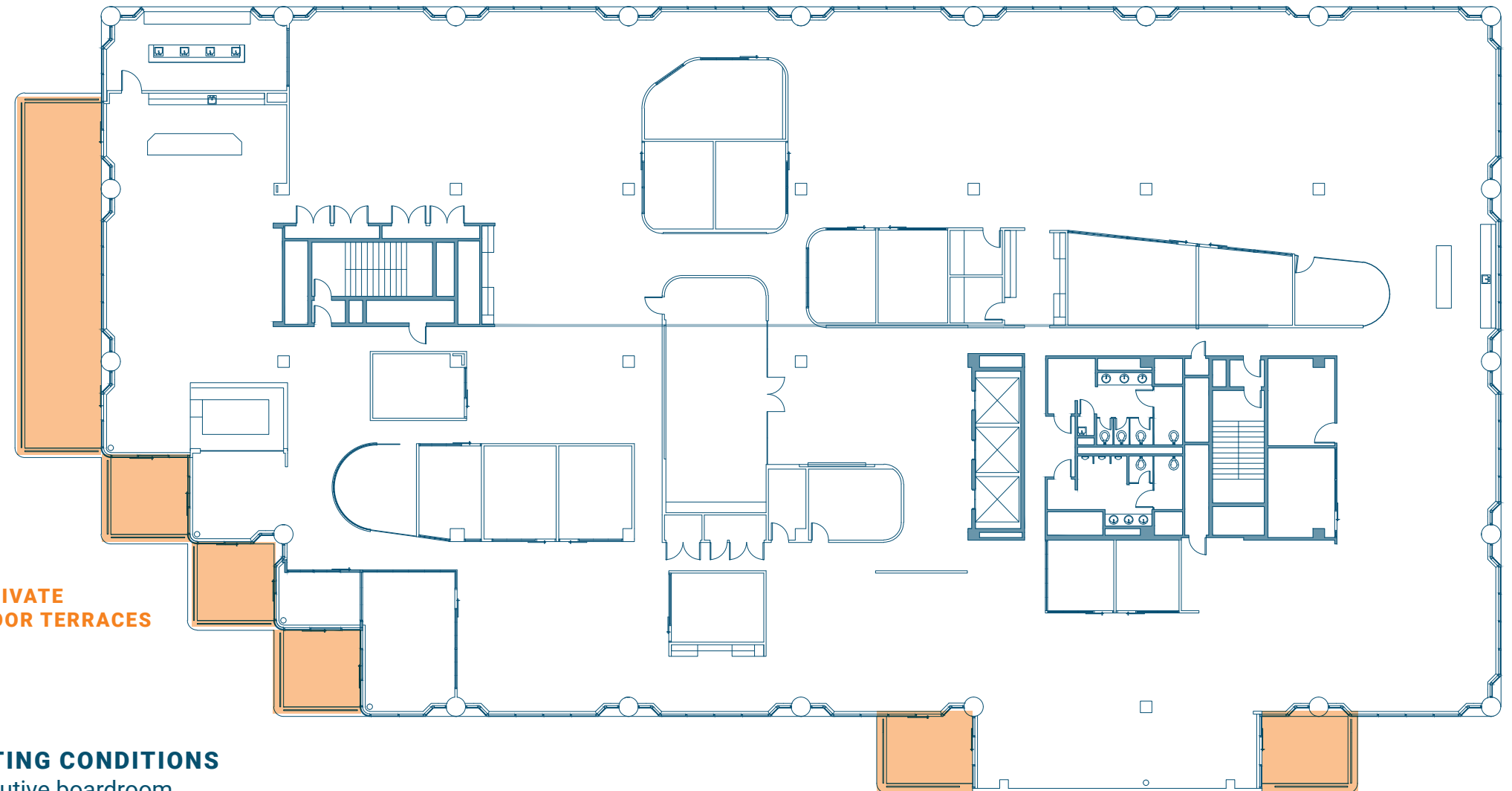
- Exquisite views of the Bay Bridge, Coit Tower, Fountain Plaza, and Halprin Park
- En-suite restrooms
- Kitchenette and bar
- Large executive boardroom with skylight
- Direct elevator access to the suite



LEVI'S PLAZA

SANSOME STREET

GREENWICH STREET



SIX PRIVATE
OUTDOOR TERRACES

EXISTING CONDITIONS

- 1 Executive boardroom
- 3 Large conference rooms
- 14 Small conference rooms or private offices
- 1 Wellness/mother's room
- 2 Phone rooms
- 2 Huddle areas
- 2 Bars